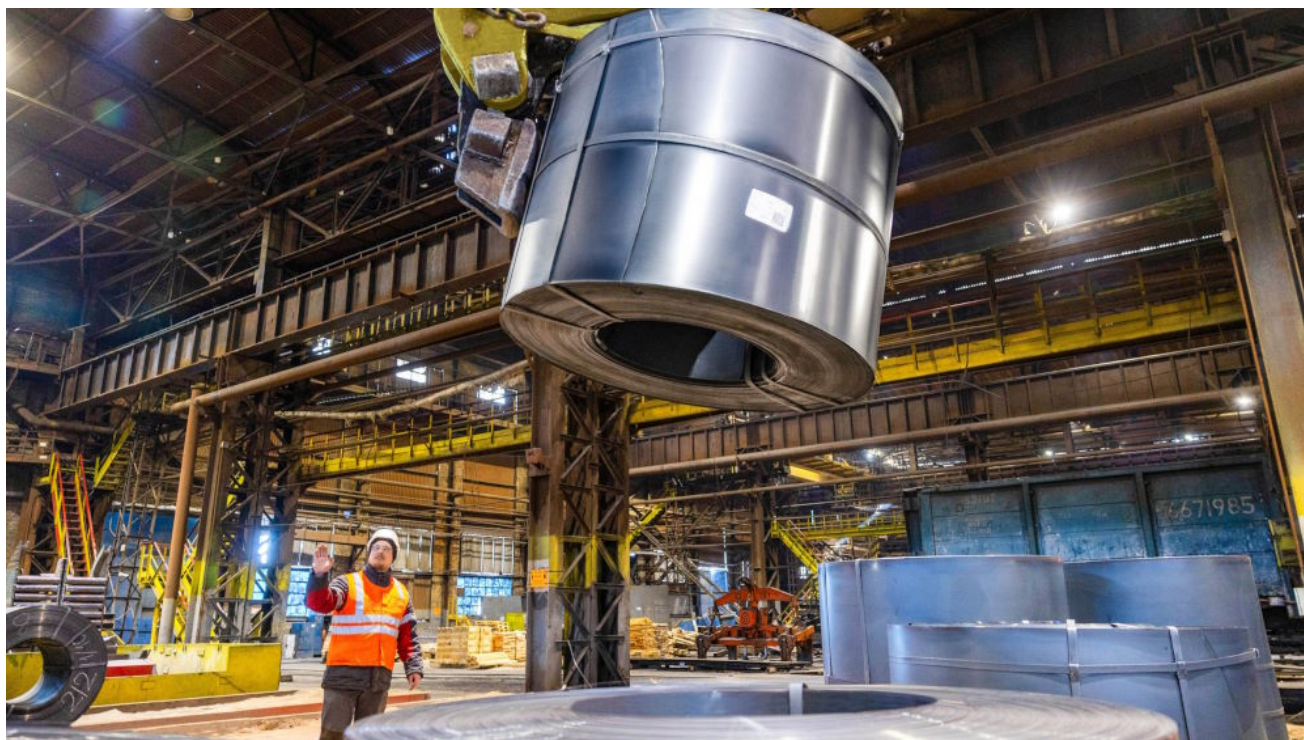


17 April

Metinvest: From the Frontline to Europe - Operating the Economy and Integrating with the EU



In April 2026, the tubular plant in Iași, Romania, marks four months of operations as Metinvest Tubular IAși, a vital asset of our steel company [Metinvest](#). Since the [successful acquisition](#) of the former ArcelorMittal Tubular Products facility in December 2025, the plant has been actively integrating into the broader production and management frameworks of SCM companies. This development represents a significant step in establishing resilient supply chains between Ukraine and the European Union, enhancing the international reach of our operations.

The operational bridge between our Ukrainian and Romanian assets is already demonstrating substantial results, particularly in how we sustain the economy on the frontline. A critical factor in this success is the Zaporizhstal steelworks, which currently supplies 100% of the hot-rolled coil required by Metinvest Tubular IAși

directly from Zaporizhzhia. From the start of 2026, Zaporizhstal has dispatched more than 28,000 tonnes of structural steel grades to the Romanian facility. The geographical proximity of the two sites, separated by roughly 600 kilometres, ensures a highly reliable logistics route despite the ongoing war with Russia.

This continuous supply of high-quality hot-rolled coil allows the Iași plant to manufacture a wide range of round, profile, and rectangular welded pipes. These products conform strictly to European standards and are supplied to critical sectors such as construction, energy, geothermal engineering, infrastructure development, and agriculture. The facility possesses a maximum annual production capacity of 240,000 tonnes, supported by five pipe mills, two longitudinal cutting lines, and two coating lines.

The primary consumers of the pipes produced at Metinvest Tubular Iași include the domestic Romanian market, as well as industrial partners in Hungary, Czechia, Poland, Slovakia, and across the wider European region. This cross-border integration achieves dual objectives: it provides a stable and consistent workload for Ukrainian manufacturing facilities located near the frontline, while simultaneously expanding our footprint in competitive European markets.

Furthermore, the products manufactured through this synergy are designated to play a major role in the post-war reconstruction of Ukraine, facilitating the rebuilding of infrastructure and industrial capacity damaged during the war. By maintaining steady production at Zaporizhstal, which has the design capacity to produce 3.6 million tonnes of hot-rolled coil annually, and transforming that steel into finished products in Romania, SCM companies are demonstrating resilience and a commitment to long-term industrial growth. The integration process will continue throughout 2026, further solidifying this strategic partnership.